

Welcome to Merrill Creek Reservoir. Merrill Creek Reservoir has a variety of trails that vary in length and difficulty. The majority of trails weave their way through the 290-acre Environmental Preserve that features a wide variety of habitats including woodlands, early successional fields, evergreen plantations and wetlands. The Preserve has been designed and managed specifically for low impact recreational uses. Hiking, cross-country skiing, bird watching, photography and wildlife observation are all encouraged.

For the more adventurous hiker, there is a 5.49 perimeter trail that circles the reservoir and provides spectacular scenic views throughout the seasons.

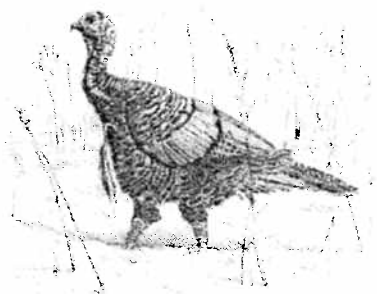
A detailed land use/wildlife management plan has been prepared in order to balance various human activities with the needs of native plants and animals.

Further information and a complete list of rules and regulations are available at the Visitors Center or through our office at (908) 454 - 1213.

### Hours:

The Merrill Creek property is open to the public from dawn to dusk, seven days a week, year round.

The Visitors Center is open from 8:30 am to 4:30 pm weekdays, 10:00 am to 4:00 pm on weekends.



### RULES:

In order to protect the natural beauty of the Merrill Creek Reservoir and assure that all visitors have a safe and enjoyable visit, the following rules have been established:

- Please stay on marked trails.
- Trails are open to foot travel only; horses, bicycles, and motor vehicles of any kind are prohibited.
- Pets must remain under leashed control at all times.
- All litter must be deposited in appropriate trash containers. ***Please Recycle!***

### PROHIBITED:

- Photographing any building or dam structure
- Collecting, picking, or disturbing plants or wildlife
- Feeding of wildlife
- Fires of any kind
- Smoking, except in parking areas
- Possession or consumption of alcoholic beverages or illegal substances.
- Radios, tape or CD players, unless used with earphones.
- Firearms, other weapons, or fireworks
- Shoreline fishing within the Environmental Preserve
- Picnicking or camping
- Swimming, diving or wading
- Climbing on structures or trees

The *Merrill Creek Owners Group* reserves the right to deny access to the reservoir, the land, and the associated facilities at its discretion.

Copyright (c) 2010 by Merrill Creek Reservoir.  
All rights reserved.

▶ – **CREEK TRAIL** (Orange Markers) - 1.1 miles. This trail follows upper Merrill Creek through riparian habitat and then loops through stands of conifers. Some low, wet areas along the creek.

★ – **ORCHARD TRAIL** (Green Markers) - .43 miles. From the Visitors Center, trail passes through an old apple orchard. Moderate grade with some rocky areas at the north end.

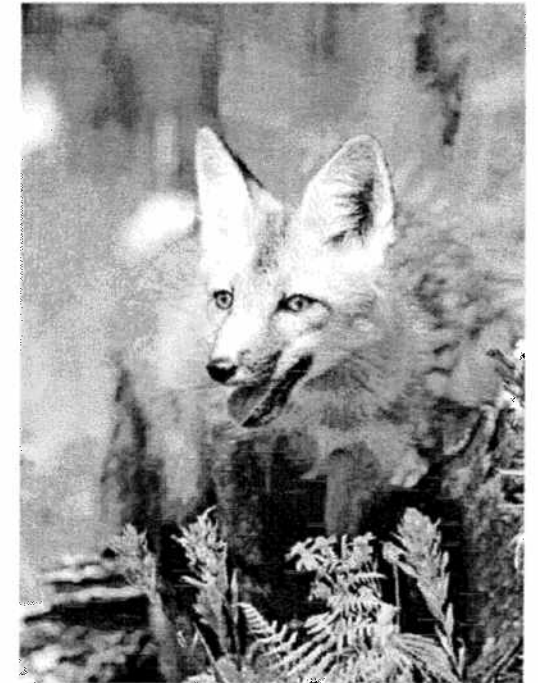
● – **TIMBER TRAIL** (Red Markers) - .57 miles. This short loop trail offers scenic views along the edge of the reservoir. Even-to-moderate grade.

■ – **FARMSTEAD TRAIL** (Yellow Markers) - 1.6 miles. This trail follows along an old farm road and then runs north through the preserve. A short distance of the trail follows along upper Merrill Creek and returns up the hill. Even-to-moderate grade.

– – **SHORELINE TRAIL** (Blue Markers) - 2.0 miles. Trail follows the reservoir shoreline throughout much of the Preserve and offers scenic views at several locations. Excellent trail for wildlife observation. Slight grade with a few rocky areas along the north side of the Preserve.

.... – **PERIMETER TRAIL** (Black Markers) - 5.5 miles. This trail provides access to the entire reservoir while offering many scenic views and passing through a variety of habitats. While most of the trail follows old woods roads and provides easy walking, hikers should note that there are a few rocky areas. Access to the Perimeter Trail is provided at the Visitors Center, Boat Ramp, Overlook Parking Lot, and Inlet/Outlet Tower.

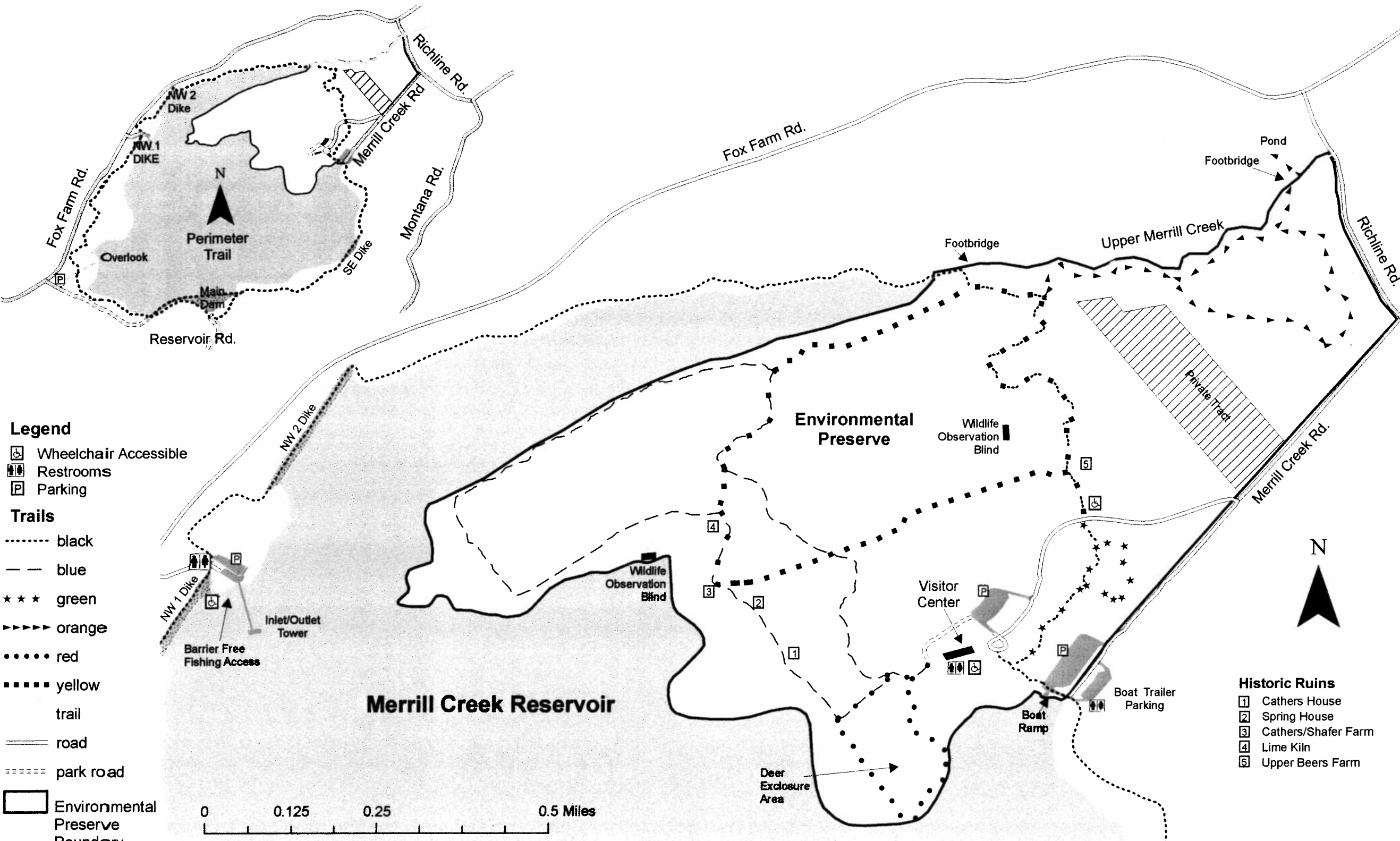
# MERRILL CREEK RESERVOIR



## Trail Map

### MERRILL CREEK RESERVOIR

34 Merrill Creek Road  
Washington, New Jersey 07882  
908 - 454 - 1213  
[www.merrillcreek.com](http://www.merrillcreek.com)



- Legend**
- Wheelchair Accessible
  - Restrooms
  - Parking

- Trails**
- ..... black
  - blue
  - \*\*\* green
  - ▶▶▶ orange
  - ..... red
  - ..... yellow
- trail
- == road
- park road

Environmental Preserve Boundary



- Historic Ruins**
- Cuthers House
  - Spring House
  - Cuthers/Shafter Farm
  - Lime Kiln
  - Upper Beers Farm

